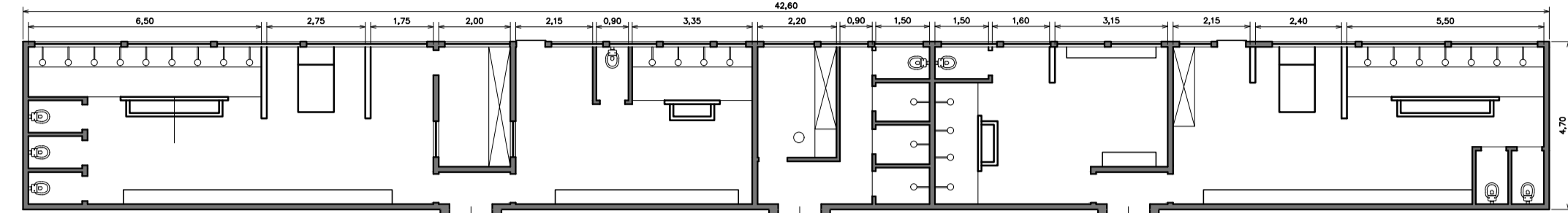
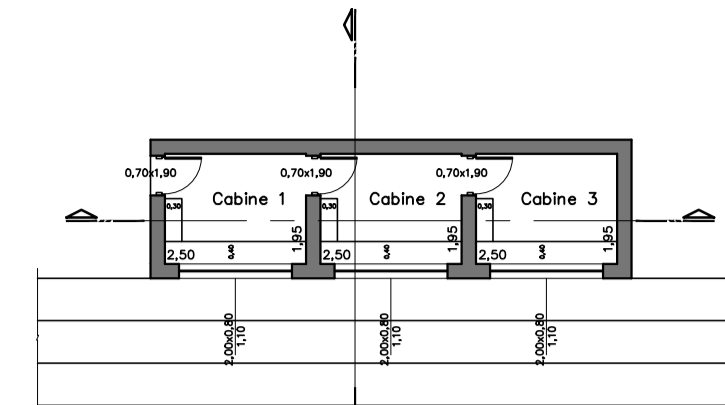


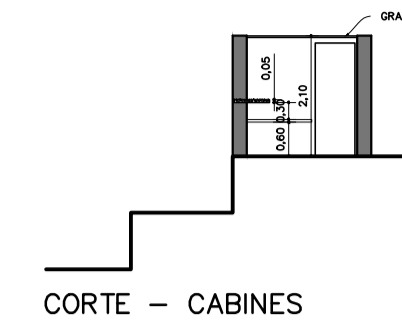
CORTE – VESTIÁRIOS



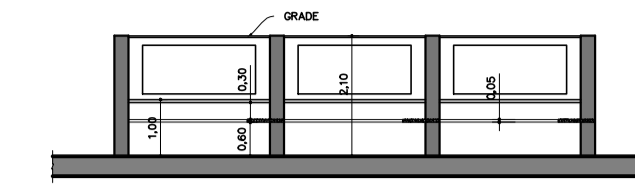
PLANTA BAIXA – VESTIÁRIOS



PLANTA – CABINES

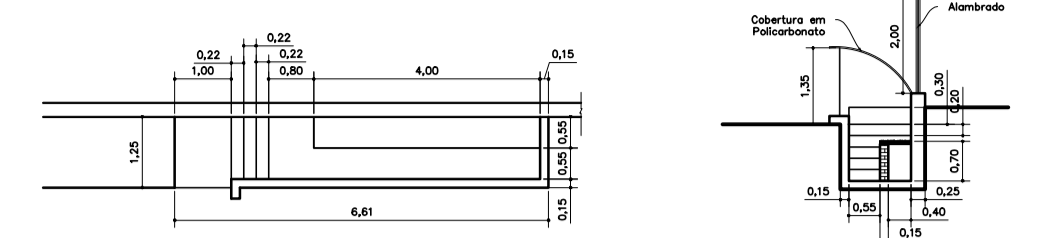


CORTE – CABINES

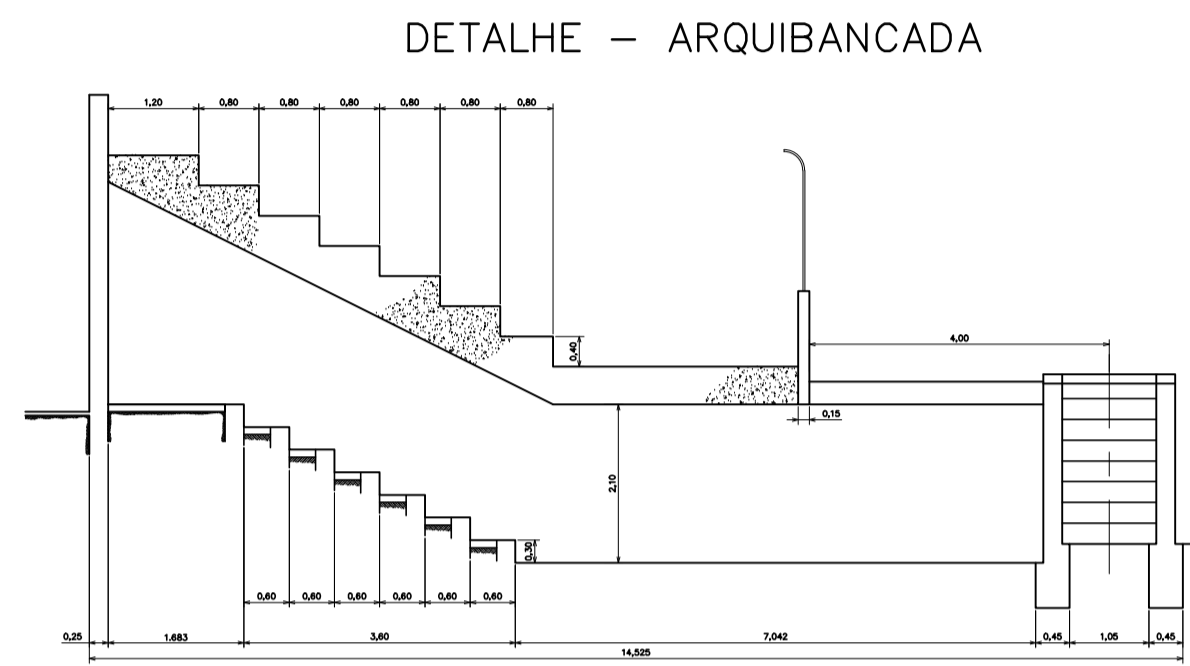


CORTE – CABINES

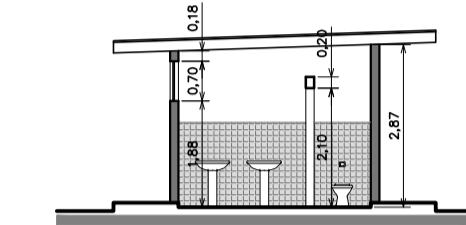
ELEVAÇÃO – CABINES



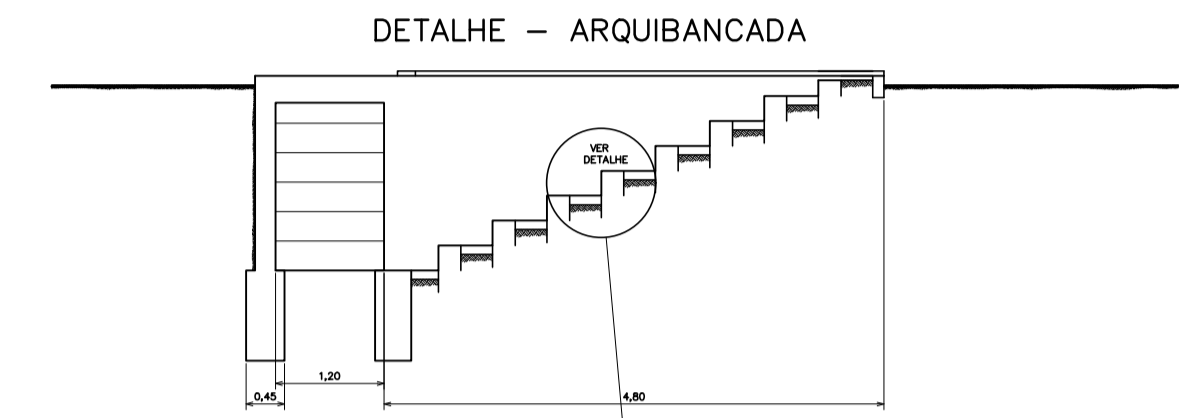
PLANTA – BANCO DE RESERVAS



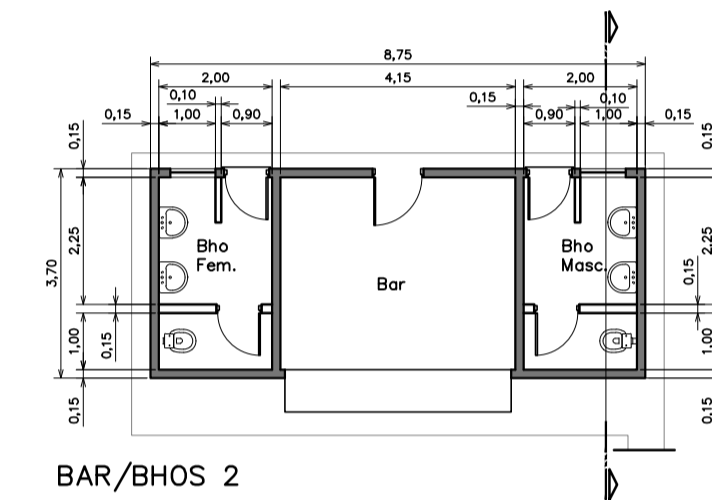
DETALHE – ARQUIBANCADA



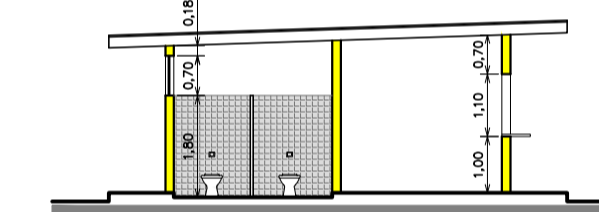
CORTE – BAR/BHOS 2



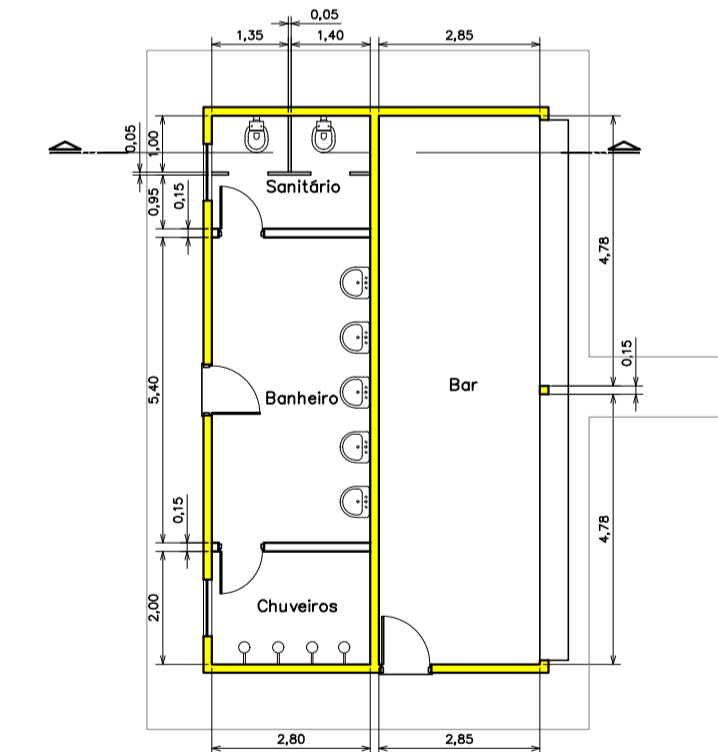
DETALHE – ARQUIBANCADA



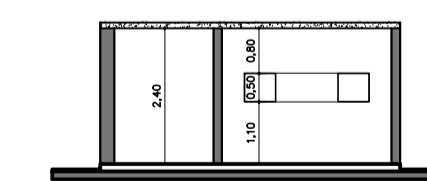
BAR/BHOS 2



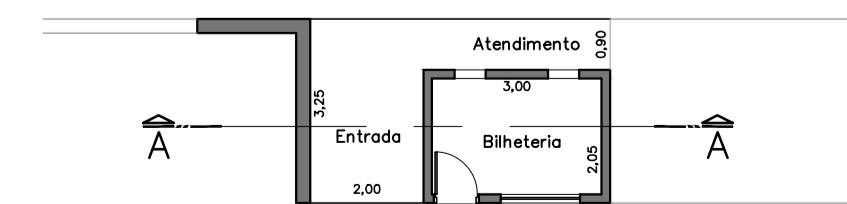
CORTE – BAR/BHOS 1
À demolir



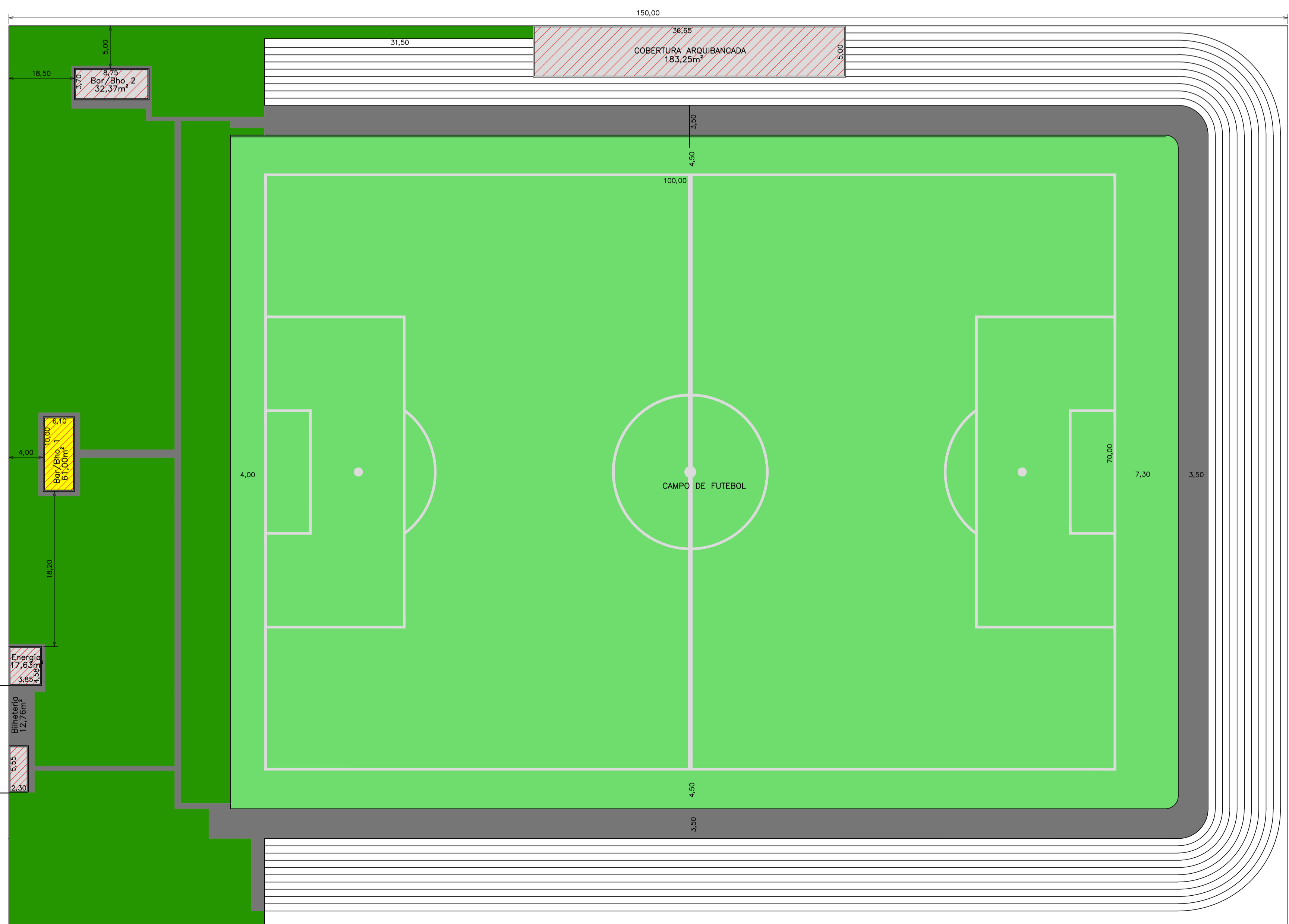
BAR/BHOS 1 – À demolir



CORTE – BILHETERIA



PLANTA – BILHETERIA



PREFEITURA DO MUNICÍPIO DE GUAIRÁ

DEPARTAMENTO DE ENGENHARIA E OBRAS
AVENIDA 23 Nº 813 – CENTRO – TELEFONES: (17) 3331- 8858

PROJETO/OBRA
REFORMA DO ESTÁDIO MUNICIPAL
JOSÉ ZUQUIM NOGUEIRA

Nº DA UNIDADE
01

TÍTULO
ARQUITETURA

ASSUNTO
CAMPO DE FUTEBOL e DEPENDENCIAS

LOCAL/MUNICÍPIO
RUA 10(Antiga Estrada de Rodagem p/ o Rio Sapucaí), Nº 20
Centro – GUAIRÁ/SP.

ÁREAS:	ESCALA NOMINAL
Campo de Futebol:	INDICADA
COBERTURA Arquibancadas.....	ESCALA GRÁFICA
Bar/Bho 1.....	
Bar/Bho 2.....	
Bilheteria.....	DATA
Casa de Energia.....	AGOSTO/2019
Subtotal	PROJETO/DES.
	GASPAR / JOÃO JOSÉ

ASSINATURAS:	PROJETO – RESP. TEC.	A.R.T. 28027230191202053
PREFEITURA	Gaspar Junqueira Dias Leles Engenheiro Civil	CREA/SP 5069944271

OBSERVAÇÕES:

FOLHA
01/01